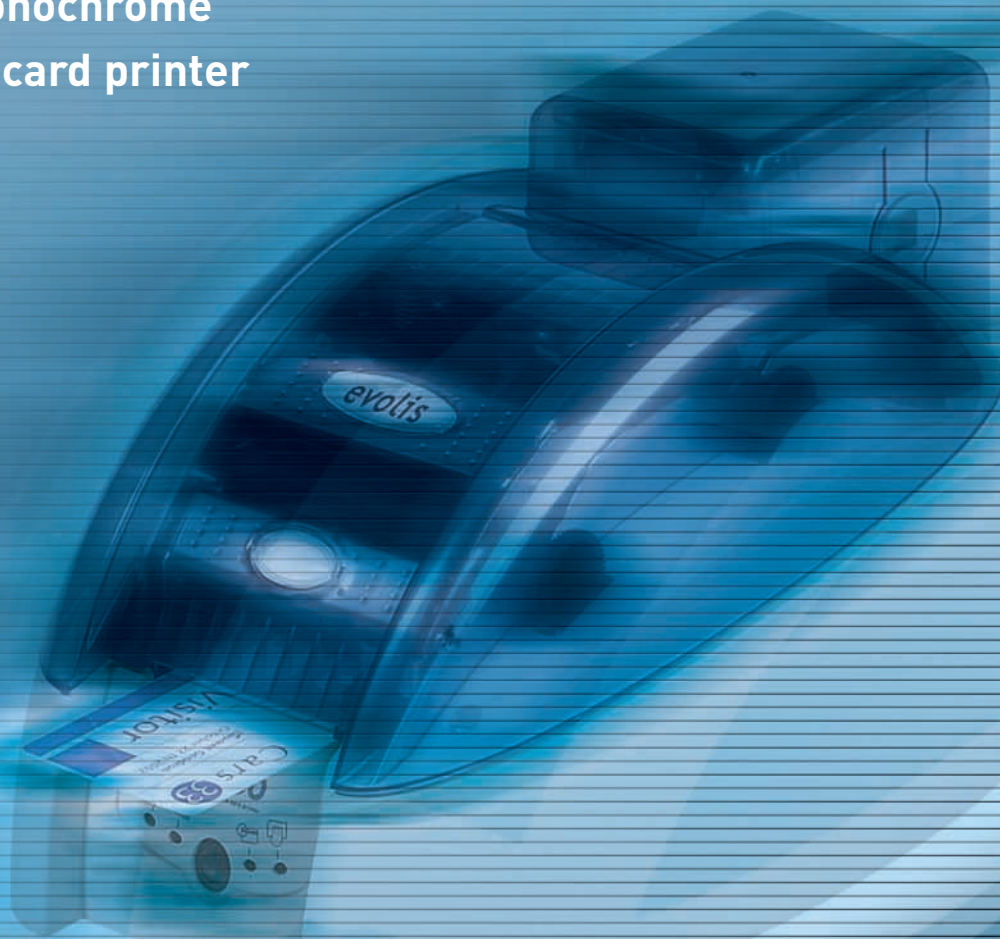


# tattoo

the thermal transfer card printer

The monochrome plastic card printer



Monochrome Thermal Transfer



300 dpi



Single-Sided



7 s/card



100 cards



0.25-0.76 mm  
(10-30 mil)





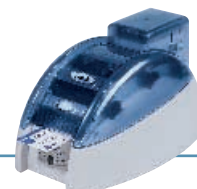
**Hi-Tech design, compactness and ease of use**, the **Tattoo** revolutionizes the world of monochrome printing on plastic cards.

In a few seconds, the **Tattoo** personalizes your pre-printed or blank plastic cards. It prints your high resolution texts, barcodes, graphics and logos.

Representing the ideal for visitor badges, loyalty cards, subscription cards, and much more, the **Tattoo** can be integrated in all types of environment: offices, bank receptions, shop counters. The **Tattoo** is today the most compact of all plastic card printers.

A mixture of technology and innovation, the **Tattoo** offers a double loading mode: card by card manual feeding (card introduced at the front) and automatic feeding thanks to its 100 card feeder. This detachable and completely enclosed feeder makes it possible to prepare several series of cards and to guarantee an optimal printing quality.

### Tattoo, the small revolution!



### Print mode

- Monochrome thermal transfer
- Line mode for text, barcode, graphic and logo printing or diffusion mode for photo printing

### Printer specifications

- Integrated ribbon saver for monochrome printing
- Automatic card thickness adjustment

### Print speed

- 500 cards/hour

### Resolution

- 300 dpi (11.8 dots/mm)

### Windows™ drivers

- For Windows™ 95, 98, Me, NT 4.0, 2000 and Xp

### Warranty

- Printer: 1 year
- Print head: 1 year, unlimited number of prints<sup>1</sup>

### Ribbon types

- Black, blue, red and green monochrome ribbons: 600 cards/roll
- White, gold, silver and scratch-off monochrome ribbons: 500 cards/roll
- BlackWAX monochrome ribbon (for ABS, special varnished plastic cards and paper cards): 600 cards/roll

### Card loading modes

- Automatic with feeder and/or hand-feed

### Options

- Serial port (available upon study)
- 100-card additional feeder
- Backpack for demonstration
- Cleaning kit

### Other printer model

- **Tattoo Mag**  
Printer with HICO / LOCO magnetic stripe encoder - ISO 7811

1 - Clause governing the use of Evolis ribbons

<b>Card types</b>	PVC, Composite PVC, PET, ABS, special varnished plastic cards and paper cards
<b>Card format</b>	ISO CR-80 - ISO 7810 (53.98 mm x 85.60 mm - 3.375" x 2.125") Maximum print area: 52 mm x 83 mm (2.04" x 3.26")
<b>Card thickness</b>	From 0.25 mm (10 mil) to 0.76 mm (30 mil)
<b>Card feeder capacity</b>	300 cards (0.25 mm - 10 mil) - 100 cards (0.76 mm - 30 mil)
<b>Resident barcodes</b>	Code 39, Code 2/5 interleaved
<b>Resident fonts</b>	Arial normal 100, Arial bold 100
<b>Printer size</b>	Height: 166 mm (6.53") - Width: 290 mm (11.42") - Depth: 187 mm (7.36")
<b>Printer weight</b>	2,5 Kg (5.5 lbs)
<b>Connections</b>	USB and Centronics parallel ports (cables supplied)
<b>Electrical</b>	110-230 Volts CA, 60-50 Hertz
<b>Environmental</b>	<ul style="list-style-type: none"> <li>■ Min / max operating temperatures: 15° / 30° C (59° / 86° F)</li> <li>■ Humidity: 20% to 65% non-condensing</li> <li>■ Min / max storage temperatures: -5° / +70° C (23° / 158° F)</li> <li>■ Storage humidity: 20% to 70% non-condensing</li> <li>■ Operating ventilation: free air</li> </ul>

Headquarters:  
Evolis Card Printer

29, avenue de la Fontaine · Z.I. Angers-Beaucouzé · 49070 BEAUCOUZE · France  
Tél : +33 (0) 241 367 606 · Fax : +33 (0) 241 367 612 · info@evolis.com

www.evolis.com